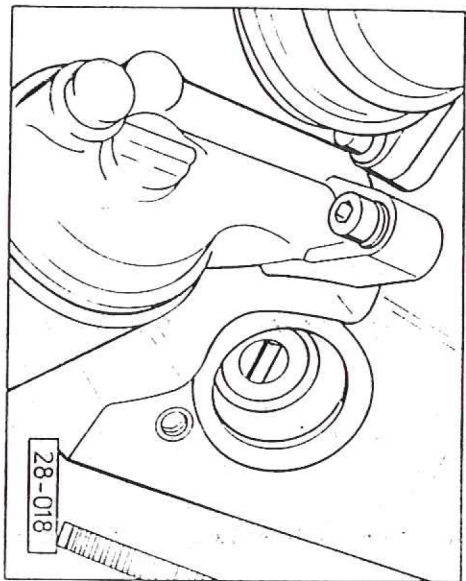
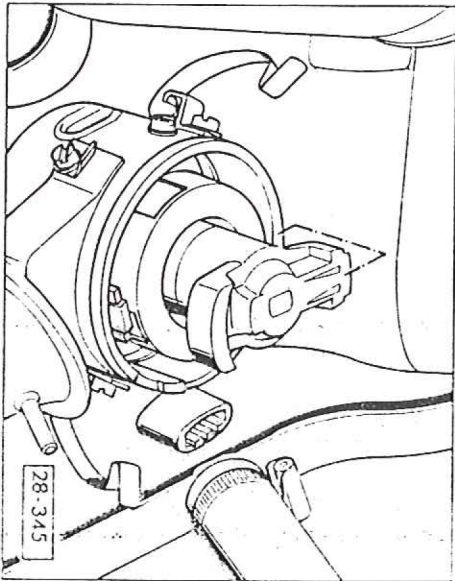


# Ignition system



— Set the oil pump shaft lug parallel with crankshaft.



- Set rotor arm so that it is pointing towards the No. 1 cylinder mark on the distributor housing.
- Insert distributor.
- Check cap for cracks and signs of tracking and clean it before fitting. Renew cap if necessary.
- Adjust ignition timing.

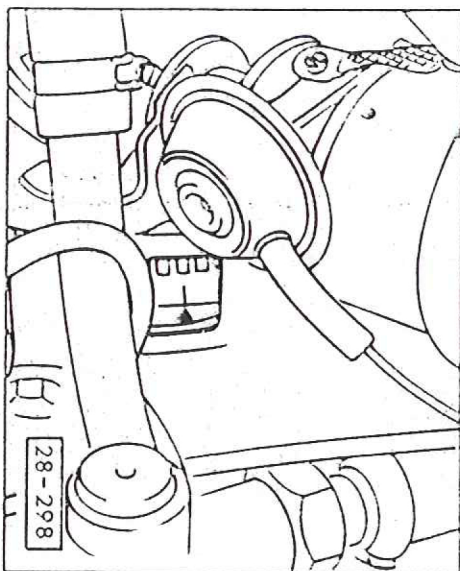
## ADJUSTING IGNITION TIMING

- Minimum engine oil temperature 60° C.
- Vacuum hose pulled off.
- Connect ignition tester and rev counter.
- Start engine and run it at idling speed.
- Check timing.

### Checking with TDC sensor:

The ignition timing is shown directly on the tester.

Specified:  $9 \pm 1^\circ$  before TDC

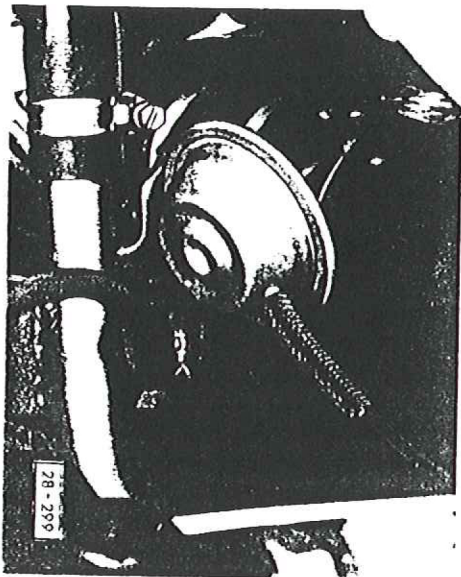


### Checking with stroboscope:

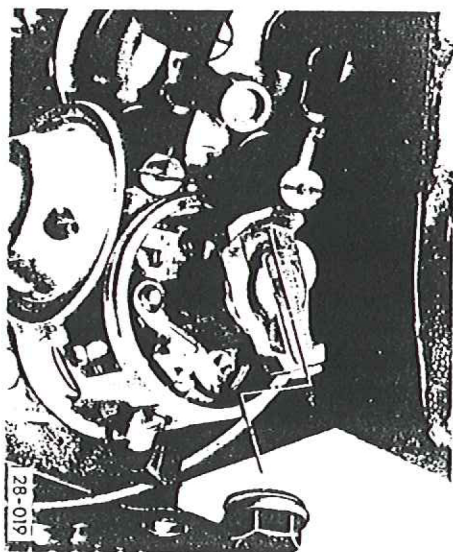
Direct flashes on to timing marks. Ignition timing mark must be in line with reference mark on clutch housing.

- Adjust timing by turning the distributor.
- Correct idling setting if necessary.

INSTALLING DISTRIBUTOR



— Set flywheel to TDC on No. 1 cylinder.

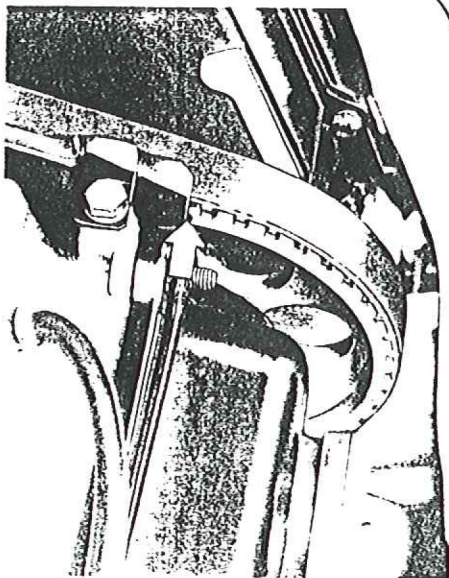


— Turn rotor so that it is pointing to mark for No. 1 cylinder on distributor housing.

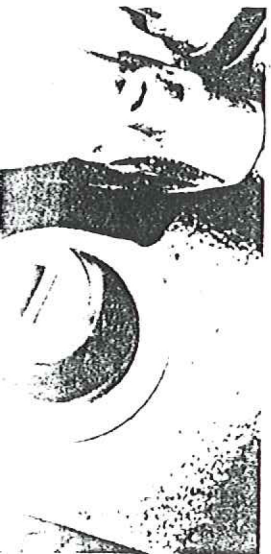
— Insert distributor.

— Before installing distributor cap, clean it and check for cracks and signs of tracking. Renew if necessary.

— Adjust ignition timing.



— Mark on camshaft sprocket must be aligned with cylinder head cover.

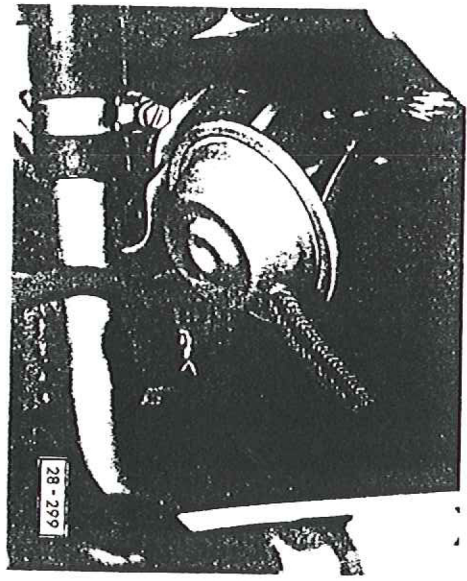


### SAFETY MEASURES FOR TCI-H-SYSTEM

In order to avoid injuries to persons or damage to the ignition system the following must be noted when working on vehicles with the TCI-H-system.

- The ignition must be switched off before any ignition wiring — including HT and test appliance leads — is disconnected or connected.
- When engine is to be turned at starter speed without starting (e.g. when checking compression) pull HT lead (terminal 4) out of distributor and earth it.
- A starting boost with quick charger is only permissible for 1 minute at a maximum of 16.5 Volts.
- Ignition must be switched off before washing engine.
- When electric and spot welding is required, the battery must be disconnected completely.
- Vehicles which have a defect in the ignition system or where this is suspected, may only be towed with the TCI-H switch unit disconnected.
- Do not connect a condenser to terminal 1 (-).
- Use only rotor arms with 1 kOhm (Designation R 1) even for radio interference suppression.
- For suppression, only 1 kOhm resistors may be used in the ignition HT leads and plug connectors with 5 kOhm.

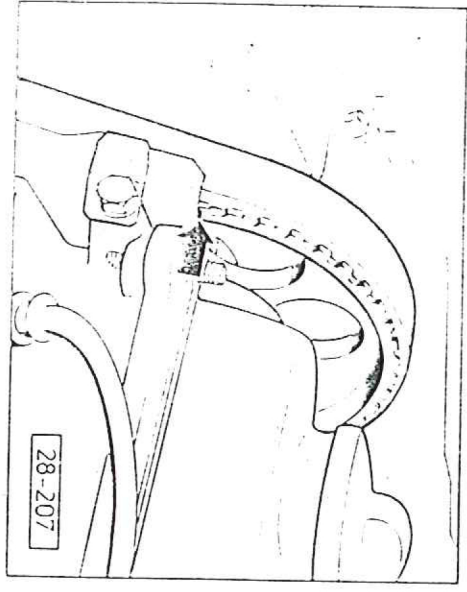
### INSTALLING DISTRIBUTOR



— Set flywheel to TDC on cylinder No. 1.

#### Note:

When engine is removed, the mark on the belt pulley must be in line with the arrow on the toothed belt guard.



Mark on camshaft sprocket must be in line with cylinder head cover.